

ilumen



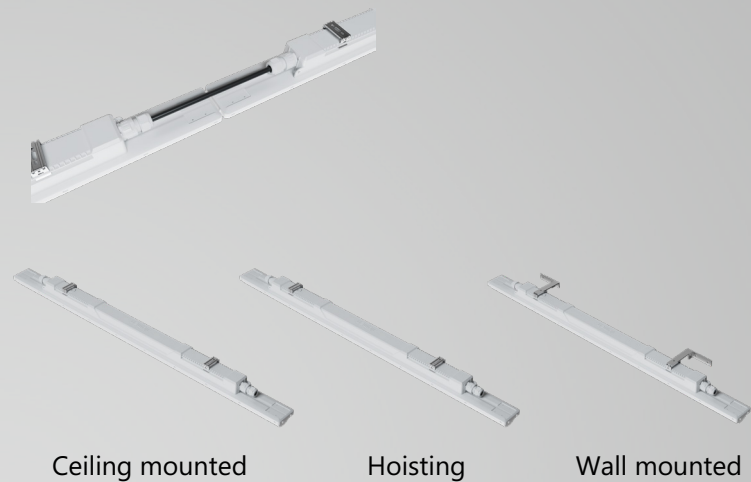
Adele

The next generation of waterproof light

WE MAKE IT
Light
GERMAN QUALITY · DEUTSCHE QUALITÄT

Waterproof Linear Light

- Integrated gluing process: provides better protection performance and increases the durability of the equipment.
- Fully enclosed design, protection level IP69K: ensures the safety of the equipment in harsh environments and prevents the intrusion of dust and water.
- High temperature water flushing: can adapt to 85°C high temperature water pressure cleaning, easy to maintain and clean.
- Convenient external wiring: tool-free cascade design makes installation and wiring simpler and faster.
- Multiple installation methods: provides three installation methods: Hoisting, ceiling mounting and wall mounting, flexible to adapt to different scenarios.



Garage



Shopping mall



Factory

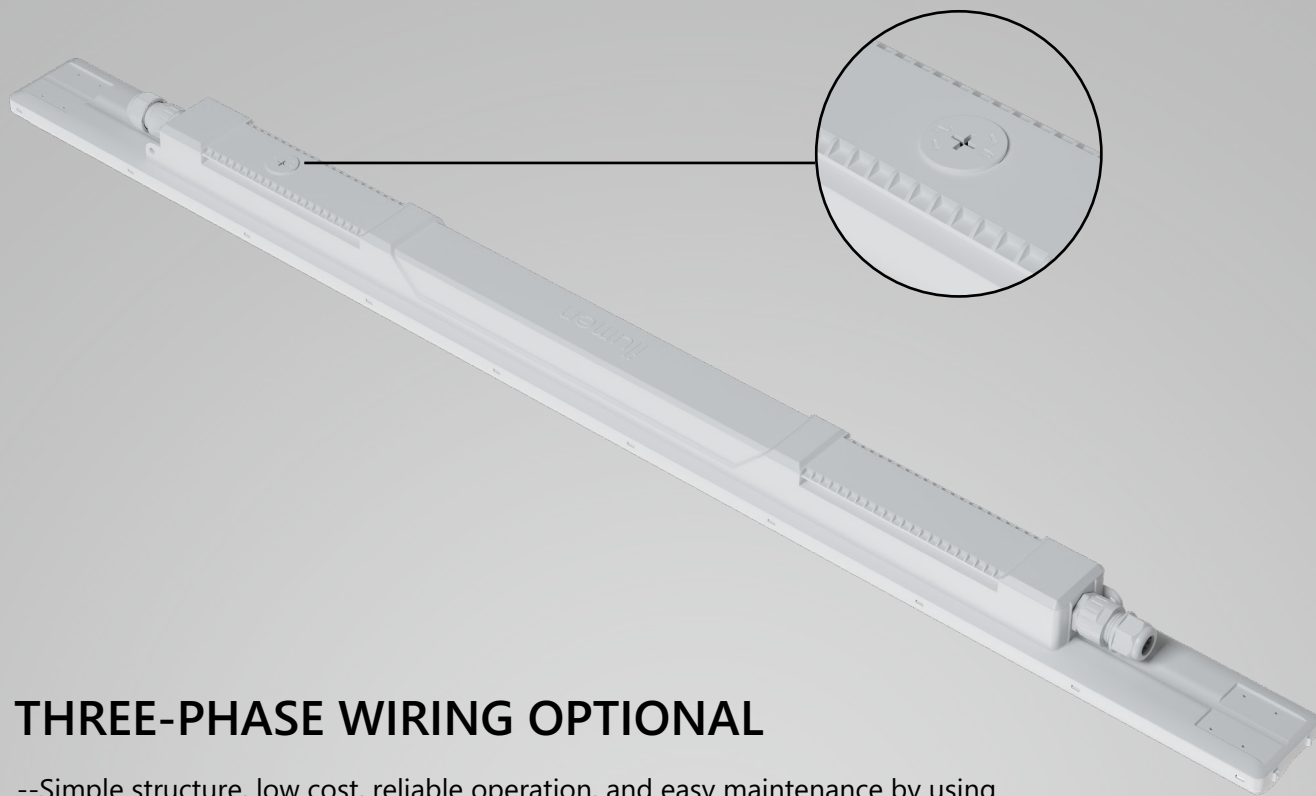


Workshop



POWER SELECTABLE & CCT SELECTABLE OPTIONAL

--When you turn on this button, you can adjust the power or color temperature to help you reduce SKU.

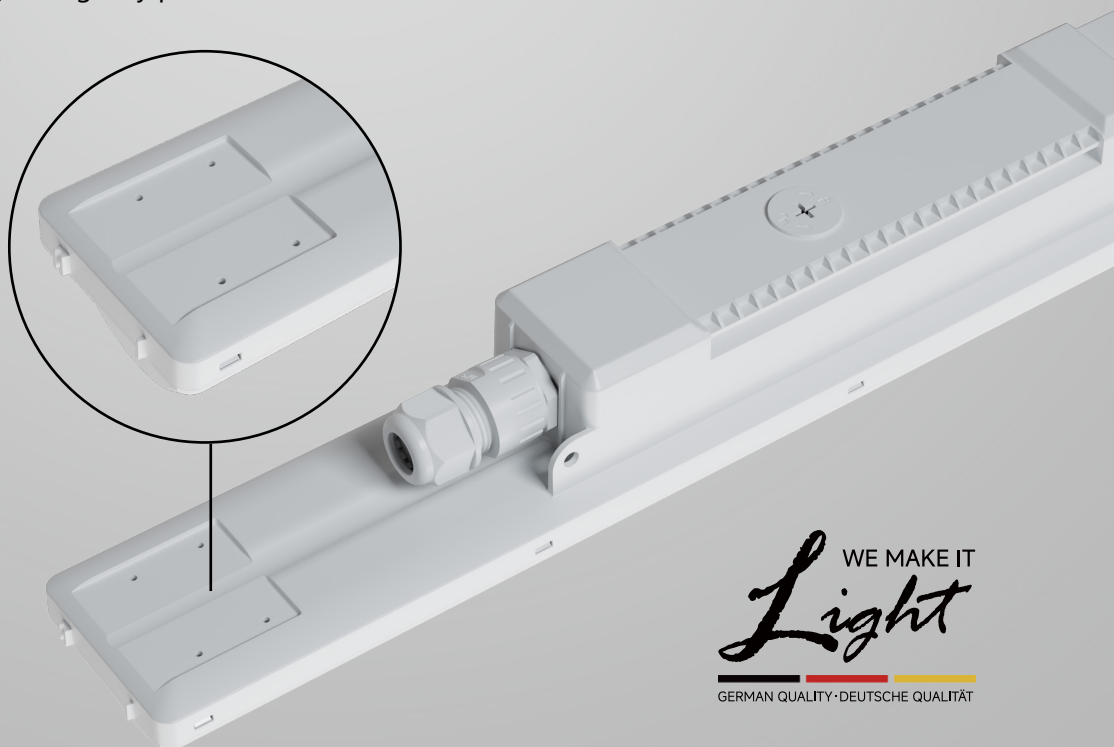


THREE-PHASE WIRING OPTIONAL

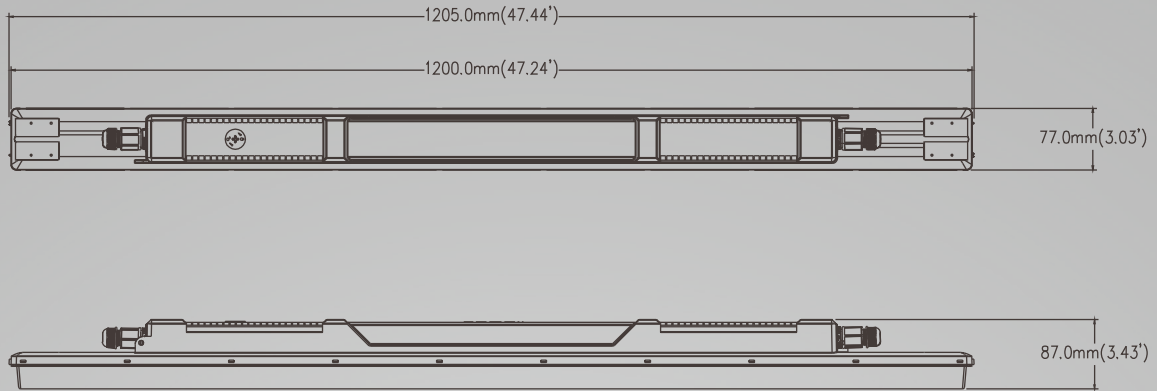
--Simple structure, low cost, reliable operation, and easy maintenance by using jumper cables and connector to wire.
--More economical than single-phase transformers and are easier to connect to loads.

MOTION SENSOR OR EMERGENCY PACK OPTIONAL

--External plate for installing emergency pack



PRODUCT PARAMETER



| | |
|------------------------------|------------------------------------------|
| Model Number | IL-TL15-NXXXX(P)40-XXX |
| Power | 12W/16W/20W 24W/32W/40W 30W/40W/50W |
| Luminous Flux | 1920lm-7500lm |
| Ra | >80 |
| Light Efficiency | 150lm/w |
| Input voltage | 220-240Vac |
| Operating Temperature | -30~45°C |
| Ingress protection code | IP69K |
| Mech. impact protection code | IK10 |
| Beam angle | 120° |
| SDCM | <3 |
| LED Lifespan | 100,000Hrs@L80B10 (Ta 25Deg) |
| Color | White |
| Mounting options | Hoisting/ Ceiling mounted / Wall mounted |
| Intelligent control | 0-10V/DALI/Microwave sensor |

WE MAKE IT
Light

GERMAN QUALITY · DEUTSCHE QUALITÄT

ilumen

📍 Address: Am Hopfenbach 12, 22926 Ahrensburg, Germany

☎ Phone: +49 4102 7798707

✉ email: info@ilumenled.de

🌐 www.ilumenled.de